

OUTBOARD MOTORS

2018

INTERNATIONAL



TOHATSU

Feel the Wind™

ENGLISH



Feel the Wind.

Tohatsu delivers a smarter,
more exciting boating experience
for boaters all around the world.



CONTENTS

- 01 Introduction
- 03 Our Mission
- 05 Our Technology
- 06 Our Team
- 07 Tohatsu BFT Series
- 11 Tohatsu MFS Series
- 17 Tohatsu MD Series
- 19 Tohatsu Two Stroke
- 21 Tohatsu MX Series
- 22 Parts & Accessories
- 24 Specifications

Check out our new brand
website at www.tohatsu.com



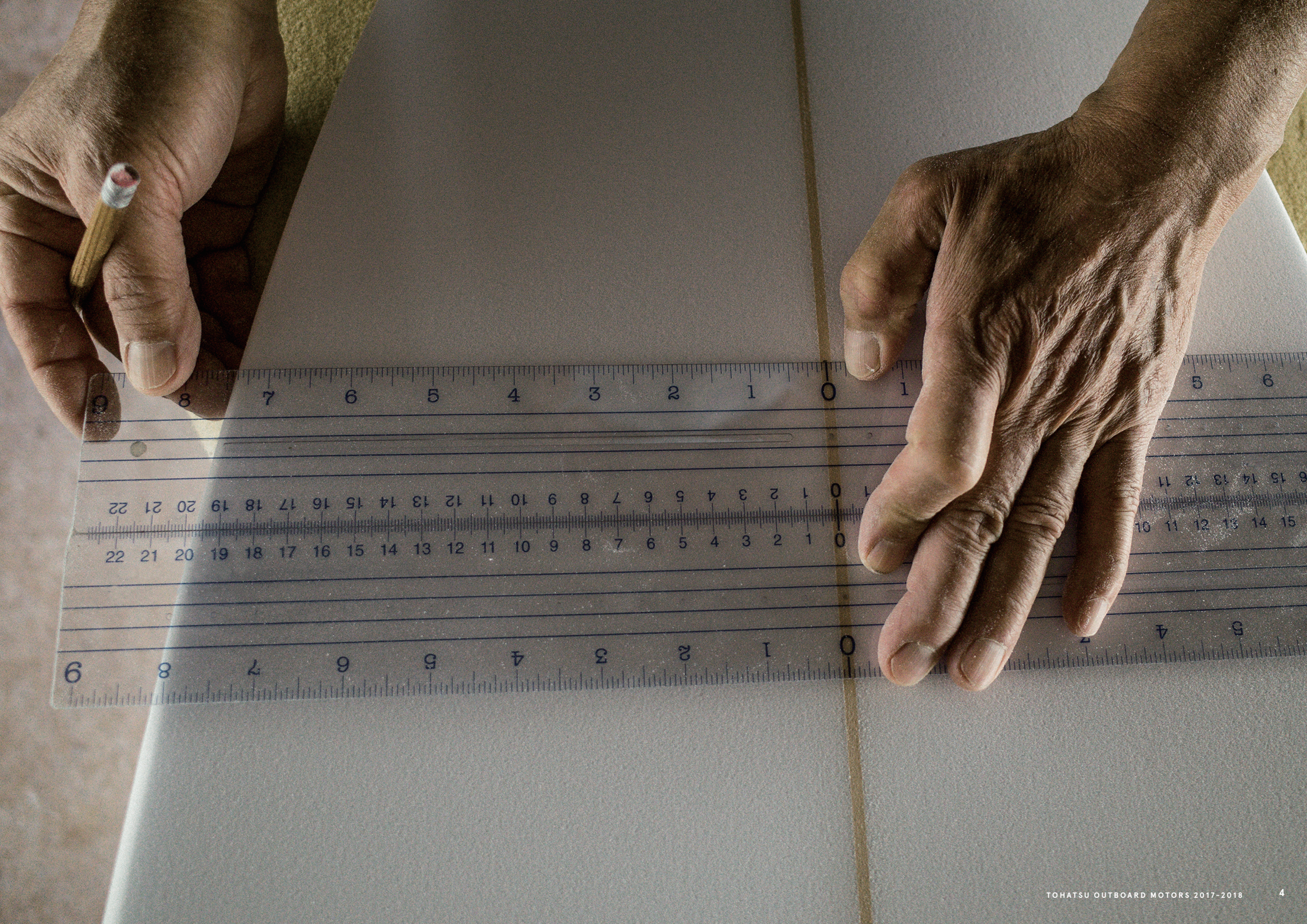
The boat is a kindred spirit to the sea, the river, and the lake. Boats immerse you in nature and navigate you to unforgettable experiences. And the outboard motor helps make all of this possible.

Outboard motors are about a whole lot more than just the specs. A truly great motor delivers it all—performance, safety, and the ultimate ease of use. That’s why we never stop asking ourselves the essential questions about what makes a great engine. We’ve been doing that since 1922, when aviation engineer Masuzo Takata founded Tohatsu.

Time and again, Tohatsu innovations have made waves that change the world. Take, for example, the Tohatsu motorcycle, which dominated the industry with its compact engine. Or Tohatsu outboard motors, built with our one-of-a-kind direct injection technology, which has revolutionized environmental performance.

We are uncompromising in our pursuit of outboard motors that are both durable and as light as possible. We pursue the ultimate in quality to deliver an inspirational engine experience. This is our unwavering promise: to deliver a more refined and stimulating boating experience.

See it. Hear it. Feel the Wind.





Technology Designed to
deliver the ultimate
boating experience.

SIMPLIQ™ TECHNOLOGY

We aim to deliver the ultimate boating experience by providing outboard motors that are simple, easy to use and of outstanding quality. Simpliq™ Technology embodies the Tohatsu technological philosophy. Named for its integration of simplicity, interface and quality, Simpliq™ Technology is the result of continuous technological innovation fueled by the pursuit of nothing less than the very best.

A team that spares
nothing for our clients
needs.

BACKS YOU UP™

Our job begins by understanding our customers' needs. We spare nothing to bring ingenuity and innovation to delivering safer, more comfortable boating for our customers. We provide our customers with personal support for their Tohatsu outboard motors to ensure the best boating experience.



Tohatsu BFT Series



Exciting Speed and Power

BFT 250/225/200

BFT250, 225, and 200 bring a large displacement 3.5 liter V6.

This narrow V6 design offers great torque and top end performance, as well as magnificent fuel economy.

They provide power where and when you need it, giving you a broader, flatter torque and smooth power delivery throughout the engine's operating range.



Sleek, Smooth and Powerful

BFT 150/115

The Tohatsu in-line 4 cylinder BFT150 and BFT115 four stroke outboard offers top class fuel efficiency while maintaining power and smooth cruise. The Variable Valve Timing and Lift Control system provides power where and when you need it, giving you excellent low-end torque and top end speed.

The result is a superior combination of power, torque and fuel efficiency.



NEW Versatile and Loyal

BFT 100/90/80/75/60

BFT 100, 90, 80, 75, 60 are among the lightest in this class. They deliver exceptional torque and power by advanced technologies. The Lean Burn Control, in addition, will get you better fuel economy while at cruising speed.



BFT SERIES TECHNOLOGY

ECOMO® – Superior fuel efficiency



ECOMO® improves fuel efficiency by allowing combustion to operate on a leaner air/fuel mixture. At cruising speed, this engine runs on up to 30% less fuel* than others in its class.

*Based on EPA Specific Fuel Consumption Mode.

*ECOMO® is a registered trademark of Honda Motor Co., Ltd.

BLAST® – System improves acceleration at low speeds



Boosted Low Speed Torque, or BLAST, improves acceleration at low speeds. A quick movement of the throttle control activates the BLAST® system, advancing the ignition curve quickly.

This will greatly improve "Hole Shot".

*BLAST® is a registered trademark of Honda Motor Co., Ltd.

Variable Valve Timing and Lift Control



Variable Valve Timing & Lift Electronic Control system provides power where and when you need it. This gives you a broader, flatter torque curve and smooth power delivery throughout the engine's operating range. The result is a superior combination of power, torque and fuel efficiency.

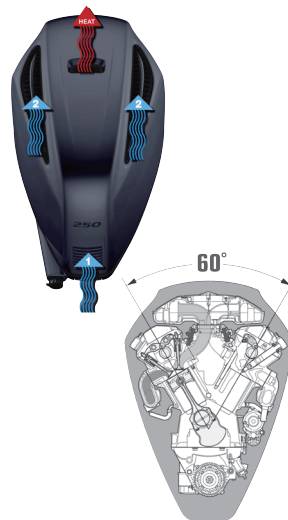
TOCS (Tohatsu Onboard Communication System)



TOCS supports communication between other standard electric devices onboard by simple plug and play.

Separate Dual Air Circuits

The BFT250 has industry-first separate dual air circuits. First intake is used to cool the engine where air is drawn into the front of engine and circulated around critical engine components. A top mounted cooling fan draws cooling air over the alternator. The second intake circuit directs cooling air from the upper intake vents, separates out moisture, and then inducts it into the throttle body. This system provides for cooler, denser air for better combustion as compared to conventional under-cowl induction systems.



Large Displacement V6

A powerful compact 24 valve Single Overhead Cam [SOHC] design. The narrow V6 design offers top performance as well as great fuel economy.

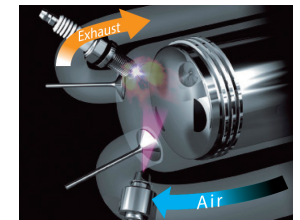
PGM-FI® – Multi-port Programmed Fuel Injection Powerful Performance

PGM-FI® delivers the precise amount of fuel/air to each cylinder. It offers top performance as well as great fuel economy.

*PGM-FI® is a registered trademark by Honda Motor Co., Ltd.

Multi Function Tiller Handle

Ergonomically designed shift lever offers smooth shifting for convenience and comfort. Throttle friction allows fine-tuning of the tiller for safety. Up front shift lever, PTT switch, and engine alert lamps provide added convenience.



BFT SERIES LINEUP



BFT 250 BFT 225 BFT 200 BFT 150 BFT 115 BFT 100 BFT 90 BFT 80 BFT 75 BFT 60

ECOMO®	●	●	●	●	●	●	●	●	●	●
BLAST®	●	●	●	●	●	●	●	●	●	●
VVT&LC	●	●		●		●	●			
TOCS	●	●	●	●	●	●	●	●	●	●
Separate Dual Air Circuits	●									
Large Displacement V6	●	●	●							
PGM-FI®	●	●	●	●	●	●	●	●	●	●
Multi Function Tiller Handle					●	●	●	●	●	●

Tohatsu MFS Series



The lightest weight in its class*

MFS 50/40/30/25

Tohatsu's MFS50/40, at just 95kg, is the lightest weight motor in its class. The 50/40 four stroke is also equipped with an improved gear case with lower gear ratio, giving you the increased low end torque your boat needs.

With Tohatsu's reputation for powerful speed and unmatched reliability, the Tohatsu MFS30/25 will keep boaters loyal. The upper and lower motor covers feature a more modern look and easier access to regular maintenance items. *Only for MFS50/40



NEW

Powerful and robust

MFS 20/15

Powerful, yet the lightest in its class, the all new Tohatsu's MFS20/15 Electronic Fuel Injection model has a lot to offer. Typically, cutting the weight down results in losing power, however, it isn't the case for Tohatsu with the exceptional torque and top end speed. Go get one and let's feel the wind.



Unmatched in its class

MFS 9.8/8/6Z

Unmatched in its class, the Tohatsu MFS9.8/8/6Z has set the standard in portable outboard power! This lightweight motor weighs in at barely over the 37kg mark and has undeniable characteristics of a true marine champion. Our MFS9.8/8/6Z outboard is skinny on fuel and big on power while never compromising performance or reliability.



Portable yet powerful

MFS 6SP/6/5/4/3.5/2.5/5LPG SP/5LPG

There is nothing special about portable motors being portable. These models are not just portable but powerful and practical in many aspects. On top of that, new MFS5C is now available in LPG-powered model (Liquefied Petroleum Gas). Sailors are no longer forced to carry two different types of fuel and it's *cleaner in emissions! *Based on the data collected by Engineering Dept. of Tohatsu



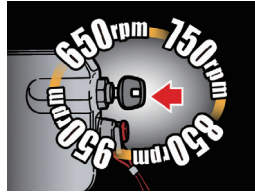
MFS SERIES TECHNOLOGY

Multi-Function Tiller Handle (Option)



It offers smooth control and easy operation having key-switch, big-shift handle, & trim/tilt switch on a big tiller handle.

Variable Idling Control



Idling / Trolling speed can be adjusted in four rpm ranges (650,750,850,950 r/min) by pressing a key-switch.

Water Flushing System



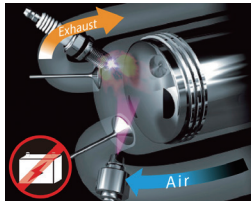
Comes standard with a convenient built-in freshwater flush system that simplifies routine engine flushing.

TOCS (Tohatsu Onboard Communication System)



TOCS supports communication between other standard electric devices onboard by simple plug and play.

Battery-Less Electronic Fuel Injection



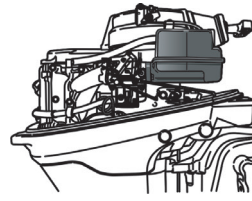
The 30 ps and 25 ps have the industry's first battery-less electronically controlled fuel injection that provides quick throttle response, excellent fuel economy and very smooth rides on the water.

Improved Gear Ratio



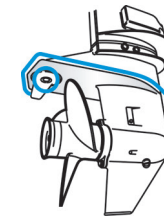
Offers wide selection of propellers Gear Ratio (26:12 / 2.17) to be capable of using bigger propellers.

Air-Silencer system



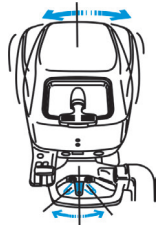
Our air-intake system has a large volume air silencer to ensure engine starting and to suppress air-intake noise during engine operation.

Wide Anti-Cavitation Plate with Trim Tab



The wide anti-cavitation plate effectively restrains the propeller from cavitating. The large trim tab helps to achieve effortless steering at high speeds while also providing corrosion protection.

Simple Steering Friction Lever



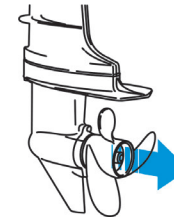
The steering friction lever, located at the front of the motor, allows the steering friction to be adjusted for both steady running at high speed and easier maneuvering while trolling. (tiller model only)

Front Shift



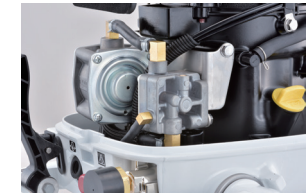
The shift lever is located at the front of the motor for easier operation.

Propeller Hub Exhaust



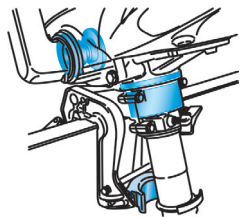
Through-the-prop exhaust makes the engine run nice and quiet.

LPG Powered



Sailors are no longer forced to carry petrol on board thanks to our new MFS5CLPG outboard. This LPG model offers easier starting, quieter operations and provides less maintenance on fuel related parts. Plus, it's 30% cleaner than conventional outboards.

Four Point dampening system



The specifically designed motor dampening system reduces vibration at all rpm ranges.

Carrying Handle



Wide and deep carrying handle enables you to carry easily.

Separate Tank

12L separate fuel tank comes standard with 6/5 ps models for a longer distance and time cruising.

Integral Tank

With a built-in fuel tank conveniently located on top, 3.5 and 2.5 becomes ready for cruising quickly and without taking up extra space in the boat. External fuel fitting comes standard with the 6/5/4 ps models to allow the motor to hook up to a remote fuel tank as well.

MFS 6SP



Designed specifically for sail boaters. This powerful sailboat engine, available with "long" and "ultra-long" shaft, has a high thrust sail drive propeller to give you the power you need. It also includes a 12V, 60W, 5A charging system for charging your battery or powering external electrical devices and its own charging cable. Sailing just got better with Tohatsu's 6hp "SP" sailboat motor!



Built-in 5 amp/12V charging system



Charging cable included



Equipped with the high thrust sail drive propeller

MFS SERIES LINEUP



MFS 50

MFS 50

MFS 40

MFS 40

MFS 30

MFS 25

MFS 20

MFS 15

Multi-Function Tiller Handle	Option	Option	Option	Option	Option	Option		
Variable Idling Control	●	●	●	●	●*	●*		
Water Flushing System	●	●	●	●	●	●	●	●
TOCS	●	●	●	●	●	●		
Battery-Less Electronic Fuel Injection					●	●	●	●
Improved Gear Ratio					●	●		
Air-silencer system							●	●
Wide anti-cavitation plate with trim tab	●	●	●	●				
Simple steering friction lever	Option	Option	Option	Option	Option	Option	●	●
Front-Shift					●	●	●	●
Propeller hub exhaust	●	●	●	●	●	●	●	●
Four point dampening system								
Carrying Handle							●	●
LPG Powered								
Special Color (Beluga White)		●		●				

* Electric Starter Model Only



Designed specifically for sail boaters. Available with a "long" and "ultra-long" shaft.



MFS 9.8

MFS 8

MFS 6Z

MFS 6

MFS 6SP

**MFS 5
LPG SP**

MFS 5

**MFS 5
LPG**

MFS 4

MFS 3.5

MFS 2.5

	MFS 9.8	MFS 8	MFS 6Z	MFS 6	MFS 6SP	MFS 5 LPG SP	MFS 5	MFS 5 LPG	MFS 4	MFS 3.5	MFS 2.5
	●	●	●								
	●	●	●								
	●**										
	●	●	●	●	●	●	●	●	●		
	●	●	●	●	●	●	●	●	●	●	●
	●	●	●	●	●	●	●	●	●	●	●
						●	●	●			
						●	●	●			

** EFT Model Only

Tohatsu MD Series



Excellent Horsepower-To- Weight Ratio

MD115/90/75/50/40/30

The TLDI® system provides all of the things you need in an outboard. It provides superior performance with exceptional fuel and oil savings. A TLDI® outboard produces fewer emissions and meets all federal and state requirements for outboard emission control. Acceleration from low to high speed is extremely smooth, making the outboard very responsive. Also, the reduction of air intake, from three to one allows quieter operation. With a TLDI® outboard you get all the punch and power of a two stroke but with the quietness and fuel efficiency of a four stroke, together in one fantastic motor.

MD SERIES TECHNOLOGY

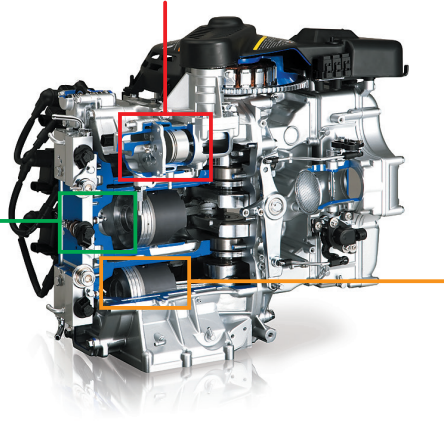
Air compressor

One of TLDI®'s essential engine components that is the driving force in achieving stabilized fuel injection.

Direct fuel injection into cylinders



Due to the design of the cylinder head chamber and piston dome, the finely atomized fuel mist created by the fuel injector is injected near the spark plug to achieve ideal combustion.



Simpliq™
Technology

Pistons dedicated to TLDI® outboards

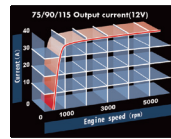
Teflon® coated pistons (Equipped on MD115/90/75) with a concave shape to the head were specifically designed for TLDI® and significantly increase fuel combustion efficiency.

Engine control unit (ECU)



The 32-bit engine control unit controls the fuel injection and ignition timing for TLDI® outboards.

High output alternator



Equipped with a high output alternator that produces 37amps of power even at 1,000rpm and a whopping 40amps at wide-open throttle.

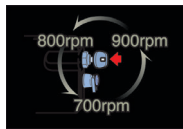
Water Flushing System



Comes standard with a convenient built-in freshwater flush system that simplifies routine engine flushing.

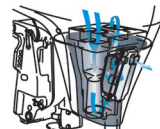
3-step trolling speed control

Can be set to any of the three-rpm ranges, 700, 800 or 900, by adjusting it on your key switch. This feature allows you to select the ideal trolling speed for maneuvering during a variety of current and wind conditions.



Idle noise reduction system

The exhaust gases and the sound are routed through the labyrinth exhaust. This process reduces the noise level to a minimum when exiting above the waterline through idle port.



MD SERIES LINEUP



MD 115



MD 90



MD 75

ECU	●	●	●
High output alternator	●	●	●
Water Flushing Systems	●	●	●
3-step trolling speed control	●	●	●
Idle noise reduction system	●	●	●



MD 50



MD 40



MD 30

ECU	●	●	●
High output alternator	●	●	●
Water Flushing Systems	●	●	●
3-step trolling speed control	●	●	●
Idle noise reduction system	●	●	●

Tohatsu Two Stroke

Proven Technology & Reliable Performance

Tohatsu modern outboard motor is generally called upon to fill one of the two roles - that of a leisure craft engine or that of a commercial engine used in such industries as fishing or transport. Because of this, it must have the ease of handling, speed, and attractive design to appeal to the leisure boater. For commercial applications, on the other hand, quick starts, dependability, durability, ease of maintenance and energy efficiency are the main concerns.

TWO STROKE LINEUP



M 140



M 115



M 90



M 18



M 15



M 9.9



M 70



M 70CX
PRO



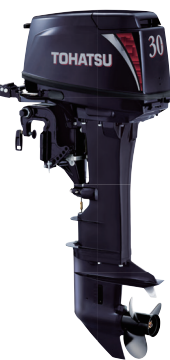
M 60



M 50



M 40



M 30



M 25



M 25
Jet Drive



M 9.8



M 8



M 6



M 5



M 4



M 3.5B



M 3.5A



M 2.5A

Tohatsu MX Series

For Professionals

Tohatsu EverRun has been built for performance in the toughest commercial environment. We, at Tohatsu Corporation, carried out in-field test with the prototype in various severe markets and environments. The tests have provided us with a lot of tips for the development of the new challenge. Now, we would like to proudly introduce you Tohatsu "EverRun".

MX SERIES LINEUP



MX 50



MX 40



MX 30

Overheat Warning System	●	●	
Maintenance Parts Kit	●	●	●
Carrying Handle	●	●	●



MX 25



MX 18

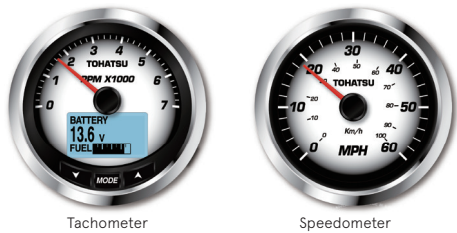


MX 15

Overheat Warning System			
Maintenance Parts Kit	●	●	●
Carrying Handle	●	●	●

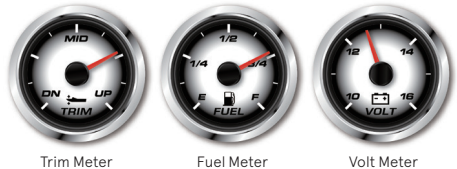
GENUINE TOHATSU PARTS AND ACCESSORIES

TOCS (Tohatsu Onboard Communication System) Plug and Play marine Gauges



Tachometer

Speedometer



Trim Meter

Fuel Meter

Volt Meter

Sample Images



Nighttime mode



LCD display color (11 different colors)

TOCS Starter Kit (3KY-72637-0)



Basic starter kit includes, Engine drop cable, Battery cable, Terminator (Female and Male), Tee Connector and Tachometer, and

Operation Manual.

In case other gauges are needed, you can just plug in the additional gauge to display.

Applicable Models

MFS25/30C (*): Applicable for serial no. 067991AD and above
 MFS40/50A: Applicable for serial no. 013179AE and above
 MD30/40/50B2: Applicable for serial no. 004743AE and above
 MD75/90C2: Applicable for serial no. 011819AE and above
 MD115A2: Applicable for serial no. 011828AE and above
 BFT Model: Applicable for all serial no.
 (*): also requires Interface Cable (3KY-76133-0) for connection between ECU and engine drop cable.

Details

PARTS NO.	DESCRIPTION
3KY-72638-0	TACHOMETER KIT (includes Harness and operation manual)
3KY-72672-0	SPEEDOMETER KIT (includes Harness for SPEED)
3KY-72523-0	TRIM METER KIT (includes Harness with 4 pins)
3KY-72600-0	FUEL METER KIT (includes Harness with 4 pins)
3KY-72531-0	VOLT METER KIT (includes Harness with 4 pins)

BENEFITS

- 1 Tachometer supports Tohatsu genuine self-diagnostic system and displays the diagnostic result
- 2 LCD data are available in five languages *1 i.e. English, French, Italian, Spanish, & German
- 3 Pop-Up screens for quick information display and warnings
- 4 Alarm codes with suggested actions
- 5 A single Tachometer can monitor up to five fuel tanks
- 6 System compatible with multiple engines*2
- 7 Calibration of Fuel Level, Trim, and Speed included
- 8 Initialization mode to assist in gauge set-up
- 9 Superior Sunlight readable display

Gauges & Meters

Premium Stylish Gauges. White or black face dial with polished stainless steel bezel, high visibility red pointer and dome glass lens.



Tachometers

These 199mm(4") 7,000 max Tachometer are available with warning lamp.

For MFS40/50 and TLDI warning lamp includes: Oil Level, Engine Temperature and battery.

For 4-Stroke warning lamp include: Low Oil Pressure.

For 4-Stroke Tachometer can be used on all electric start models by using select 4, 6 or 12 pole switch on rear of meter.

All gauges include lead wire, mounting hardware included.

Part Number	Color	Models
3GF-72647-1	Black	MFS40/50A & TLDI Model
3GL-72647-1	White	MFS40/50A & TLDI Model
3AC-72638-1	Black	4-Stroke & 2-Stroke Auto Mixing Oil Model
3AD-72638-1	White	4-Stroke & 2-Stroke Auto Mixing Oil Model

Speedometers

These Speed Meter with in M.P.H. and Km/h. Includes vinyl pipe, sender and hardware.

Part Number	Color	Description
3GF-72672-0	Black	60mph 4" Diameter
3GL-72672-0	White	60mph 4" Diameter



Water Pressure Meter

Monitors your cooling water pressure. Includes vinyl pipe and installation hardware.

Part Number	Description
3GF-72598-0	2" Diameter 0-10 PSI Black
3GL-72598-0	2" Diameter 0-10 PSI White



Trim Meter

Magnetic type gauge shown angle for optimum performance and efficiency. 2" diameter. Includes installation hardware. For use 2-wire senders.

Part Number	Description
3GF-72571-0	For 2-wire sender Black
3GL-72571-0	For 2-wire sender White



Hour Meter

Indicates readout LCD the number of hours your outboard motor has been operated to indicate when periodic services are necessary.

Part Number	Description
3GF-72524-0	2" Diameter Black
3GL-72524-0	2" Diameter White



Fuel Gauge

This 2" Fuel Gauge can help you monitor fuel level. Connects easily using your boat's fuel sending unit harness.

Part Number	Description
3GF-72596-0	2" Diameter Black
3GL-72596-0	2" Diameter White



Volt Meter

Monitors your charging system. Includes harness and installation hardware.

Part Number	Description
3GF-72529-0	2" Diameter Black
3GL-72529-0	2" Diameter White



Multi Function Tiller



Part Number	Applicable Models
3GFQ63000-1	MD40/50B2
3NVQ63000-0	MFS25/30C
3KYQ63000-0	MFS40/50A

Propellers

The propeller selection chart can be used to help you in selecting the correct propeller for your Tohatsu outboard. Remember that in any application, discrepancies in performance can result due to the different boat hull designs, the final carrying load and your particular needs.

Model	Propeller Dia		Pitch	Material	Standard Propeller				Part Number	
	mm	in			M2.5A2	M3.5A2	M3.5B2	MFS2.5B/3.5B		
M2.5/3.5A2/ 3.5B2 (2-Stroke) & MFS2.5B/3.5B (4-Stroke)	188	7.4	4.5	Plastic	●	●	●		314B64103-0	
	188	7.4	6	Plastic	(S,L)	(S,L)	●		309-44106-0	
	188	7.4	7	Plastic		●	(S,L)	(S,L)	3F0-64101-0	
	188	7.4	6	Aluminum	●	●			309B64107-0	
188	7.4	6	Aluminum			●	●	3F0B64512-0		
Model	Propeller Dia		Pitch	Material	Standard Propeller				Part Number	
	mm	in			M4C	M5B	MFS4C	MFS5C/4C		MFS4CISP
M4C & 5B (2-Stroke) & MFS4/5/6C/ 6CISP (4-Stroke)	212	8.3	6	Aluminum	●	●	●	(L)	●	593B64512-1
	200	7.9	6	Aluminum	●	●	●	(L,L)	●	3B2B64513-1
	198	7.8	7	Aluminum	●	●	(S,L)		●	3R1B64514-1
	198	7.8	8	Aluminum	(S,L)	(S,L,L)	●	(S,L)	●	3R1B64516-1
200	7.9	9	Aluminum	●	●	●		●	369B64518-1	
Model	Propeller Dia		Pitch	Material	Standard Propeller				Part Number	
	mm	in			M6/BB	M9.BB	MFS6A3	MFS8A3		MFS9.BA3
M6/8/ 9.8B (2-Stroke) & MFS8/9.BA3 (4-Stroke)	221	8.7	5	Aluminum	●	●	●	●	●	3V1B64510-0*
	216	8.5	6.5	Aluminum	●	●	(L)	●	●	3B2B64513-1
	226	8.9	7	Aluminum	(L,L)	●	●	●	●	3B2B64514-1
	216	8.5	7	Aluminum	●	●	●	●	●	3V1B64514-0*
	216	8.5	7.5	Aluminum	●	(L,L)	●	(S,L,L)	(L,L)	3B2B64515-1
	226	8.9	8.3	Aluminum	(S)	(S)	●	(S)	(S)	3B2B64517-1
226	8.9	10	Aluminum	●	●	●	●	●	3B2B64519-1	

● = Optional * = 4 Blades

Model	Propeller Dia		Pitch	Material	Standard Propeller					Part Number
	mm	in			M9.9/5D2	M1B2	MX1E2	MX1B2	MFS15/20D	
M9.9/5D2/ MX15/1B2 (2-Stroke) & MFS15/20D (4-Stroke)	234	9.2	6	Aluminum	●	●	●	●	●	362B64107-1
	234	9.2	7	Aluminum				●	●	362B64105-1
	254	10.0	7	Aluminum					●	3Z0B64514-3*
	241	9.5	8	Aluminum	(L,L)	(L)	(L)	(L)		3B8B64516-1
	235	9.3	9	Aluminum	(S)	(S,L)	(S)	(S,L)	(L)	3B8B64518-1
	235	9.3	10	Aluminum	●	●	●	●	(S)	3B8B64521-1
235	9.3	11.5	Aluminum	●	●	●	●	●	3B8B64524-1	
Model	Propeller Dia		Pitch	Material	Standard Propeller Size			Part Number		
	mm	in			M25/30H	MX25/30H	MFS25/30C			
M25/30H/ MX25/30H (2-Stroke) & MFS25/30C (4-Stroke)	260	10.2	8	Aluminum	●	●	●	348B64106-5		
	247	9.7	9	Aluminum	(L)	(L)	(L)	3R0B64518-0		
	247	9.7	10	Aluminum	●	(L)	●	3R0B64521-0		
	249	9.8	11	Aluminum	(L)	●	(L)	3R0B64523-0		
	249	9.8	12	Aluminum	●	(S)	●	3R0B64525-0		
	244	9.6	13	Aluminum	(S)	(S)	(S)	3R0B64527-0		
252	9.9	14	Aluminum	●	●	●	349B64529-1			

● = Optional * = 4 Blades

Model	Propeller Dia		Pitch	Material	Standard Propeller Size							Part Number
	mm	in			M40/50D3	M40D2	M50D2	MD40B2	MD50B2	MFS40A	MFS50A	
M40/50D2/ M40/50D3 (2-Stroke) & MD40/ 50B2 (TLDI) & MFS40/50A (4-Stroke)	290	11.4	7	Aluminum	●	●	●	●	●	●	●	348B64108-1*
	311	12.2	9	Aluminum	●	●	●	●	●	●	●	3TSB64518-0
	290	11.4	11	Aluminum	●	(S,L,L)	●	●	●	●	●	3TSB64523-0
	283	11.1	12	Aluminum	●	(S,L)	(S,L)	(S,L)	●	●	●	3TSB64525-0
	277	10.9	13	Aluminum	(S,L,L)	●	●	●	(S,L)	(S,L)	●	3TSB64527-0
	279	11.0	14	Aluminum	●	●	●	●	●	●	(S,L)	3TSB64529-0
	278	11.0	15	Aluminum	●	●	●	●	●	●	●	3TSB64532-0
	279	11.0	16	Aluminum	●	●	●	●	●	●	●	3KYB64534-0
280	11.0	17	Aluminum	●	●	●	●	●	●	●	3KYB64536-0	
Model	Propeller Dia		Pitch	Material	Standard Propeller Size			Part Number				
	mm	in			M60/70C/90A2	M115/140A2	MD115A2					
M60/70C/70CX/ 90A2/115/140A2 (2-Stroke) & MD115A2 (TLDI) MD15/90C2 (TLDI)	356	14.0	9	Aluminum	●	●	●	3HKB64518-0				
	356	14.0	11	Aluminum	●	●	●	3HKB64523-0				
	349	13.8	13	Aluminum	●	●	●	3HKB64527-0				
	343	13.5	15	Aluminum	(L,L)	●	●	3HKB64532-0				
	337	13.3	17	Aluminum	●	(L,L)	●	3HKB64536-0				
	335	13.2	19	Aluminum	●	●	●	3HKB64541-0				
335	13.2	21	Aluminum	●	●	●	3HKB64545-0					

● = Optional * = 4 Blades

Control Boxes

Our Side Mount and Binnacle Mount control boxes are designed to provide remote throttle & shift control for Tohatsu outboards.

Side Mount Remote Control Box

Designed for Tohatsu outboards.

Standard features include a fast warm-up lever, Key type ignition switch, an emergency stop switch, choke switch, PTT Switch (as selected models) and 6.3M (21FT) wiring harness.

Part Number	Description	Models
3U2B84330-0	RC12A	MFS8-30 (4-Stroke) M40-90 (2-Stroke) with PTT
3U2B84340-0	RC12B	MFS15-30 (4-Stroke) M40-90 (2-Stroke) without PTT
3U2B84350-0	RC12C	MFS8/9.8 (4-stroke) M8-30 (2-Stroke) with electric starter
3U2B84360-0	RC12D	MFS4 (4-Stroke) M4-30 (2-Stroke) without electric starter
3U2B84370-0	RC12E	M115/120/140 (2-Stroke)
3U2B84500-0	RC12F	MFS40/50 (4-Stroke) MD30/40/50/75/90/115 (TLDI)



Top Mount Controls

Part Number	Description
3U3-84490-0	Control Head Assy/Top-Single
3U3-84540-0	Control Head Assy/Top-Twin



Control Head Assy/Top-Single

Control Head Assy/Top-Twin

Flush Mount Controls

Part Number	Description
3U3-84600-0	Control Head Assy/Flush Mount
3U3-84620-0	Control Head Assy/Center Console



Control Head Assy/Flush Mount

Control Head Assy/Center Console

Note: For detailed information of Tohatsu Parts & Accessories, Please contact your local dealer.

SPECIFICATIONS

Tohatsu BFT Series

Model	BFT250	BFT225	BFT200	BFT150	BFT115	BFT100	BFT90	BFT80	BFT75	BFT60	BFW60
No. of Cylinder	6			4						3	
Output	250ps (183.9 kw)	225ps (165.5 kw)	200ps (147.1 kw)	150ps (110.3 kw)	115ps (84.6 kw)	73.6ps (100 kw)	90ps (66.2 kw)	80ps (58.8 kw)	75ps (55.2 kw)	60ps (44.1 kw)	
Displacement	3,583 cm ³ [218.6 cu.in]	3,471 cm ³ [211.7 cu.in]		2,354 cm ³ [143.6 cu.in]		1,496 cm ³ [91.3 cu.in]			998 cm ³ [61.0 cu.in]		
Bore x Stroke	89 x 96 mm [3.5 x 3.8 in]	89 x 93 mm [3.5 x 3.7 in]		87 x 99 mm [3.4 x 3.9 in]		73 x 89.4 mm [2.9 x 3.5 in]			73 x 79.5 mm [2.9 x 3.1 in]		
Max. RPM Range	5,300 - 6,300 r/min	5,000 - 6,000 r/min			4,500 - 6,000 r/min	5,500 - 6,500 r/min	5,300 - 6,300 r/min	5,000 - 6,000 r/min			
Starting	Electric										
Control Type	Remote Control					Remote Control or Tiller Handle					
Gear Shift	Forward - Neutral - Reverse										
Gear Ratio	2.00:1	1.86:1		2.14:1		2.33:1			2.07:1	2.33:1	
Transom Height	25"				20"						
Fuel	Unleaded Gasoline (87 Pump Octane or higher)					Unleaded Gasoline (91 Pump Octane or higher)	Unleaded Gasoline (87 Pump Octane or higher)				
Recommended Oil	API Standard (SG, SH, SJ) SAE 10W-30										
Fuel Tank	Optional										
Weight*	284 kg (625 lbs)	272 kg (600 lbs)	265 kg (584 lbs)	217 kg (478 lbs)		166 kg (366 lbs)		165 kg (364 lbs)		110 kg (243 lbs)	119 kg (262 lbs)
Alternator Output	12V, 1080W, 90A			12V, 660W, 55A		12V, 420W, 35A			12V, 264W, 22A		
Model	BFT250	BFT225	BFT200	BFT150	BFT115	BFT100	BFT90	BFT80	BFT75	BFT60	BFW60
PGM-FI®	S	S	S	S	S	S	S	S	S	S	S
BLAST®	S	S	S	S	S	S	S	S	S	S	S
ECOMO®	S	S	S	S	S	S	S	S	S	S	S
Variable Valve Timing & Lift Control	S	S	-	S	-	S	S	-	-	-	-
Compatible with TOCS (Tohatsu Onboard Communication System)	S	S	S	S	S	S	S	S	S	S	S
Sport Thrust Gear Case	-	-	-	-	-	-	-	-	-	-	S

* Weight Specification is based on the lightest version. ** Alternator on Certain Models LEGEND S Standard Specifications are subject to change without notice.

Tohatsu MFS Series

Model	MFS50	MFS40	MFS30	MFS25	MFS20	MFS15	MFS9.8	MFS8	MFS6Z	MFS6 SP	MFS6	MFS5 LPG	MFS5 LPG SP	
No. of Cylinder	3				2				1					
Output	50 ps (36.8 kw)	40 ps (29.4 kw)	30 ps (22.1 kw)	25 ps (18.4 kw)	20 ps (14.7 kw)	15 ps (11 kw)	9.8 ps (7.2 kw)	8 ps (5.9 kw)	6 ps (4.4 kw)	6 ps (4.4 kw)		5 ps (3.7 kw)		
Displacement	866 cm ³ (52.9 cu.in)		526 cm ³ (32.09 cu.in)		333 cm ³ (20.3 cu.in)		209 cm ³ (12.8 cu.in)			123 cm ³ (7.5 cu.in)				
Bore x Stroke	70 x 75 mm (2.4 x 2.36 in)		61 x 60 mm (2.4 x 2.36 in)		61 x 57 mm (2.4 x 2.24 in)		55 x 44 mm (2.17 x 1.73 in)			59 x 45 mm (2.32 x 1.77 in)				
Max. RPM Range	5,000 - 6,000 r/min		5,250 - 6,250 r/min	5,000 - 6,000 r/min	5,400 - 6,100 r/min			5,000 - 6,000 r/min		5,000 - 6,000 r/min				
Starting	Electric		Electric & Manual or Manual							Manual				
Control Type	Remote Control or Tiller Handle									Tiller Handle or Opt. Remote Control				
Gear Shift	Forward - Neutral - Reverse													
Gear Ratio	2.08:1		2.17:1		2.15:1		2.08:1			2.15:1				
Propeller Selection Range	7" - 17"		8" - 14"		8" - 11.5"		5" - 10"			6"		6" - 9"		
Transom Height	15", 20"		15", 20"		15", 20"		15", 20", 25"	15", 20"		20", 25"		15", 20" 20", 25"		
Fuel	Unleaded Gasoline (87 Octane)											HD-5 (More than 65% Propane)		
Recommended Oil	Tohatsu 4stroke Outboard Motor Oil													
Fuel Tank	25 Lit (6.6 US Gal.) Separate Tank				12 Lit (3.2 US Gal.) Separate Tank					12 Lit (3.2 US Gal.) Separate Tank	12 Lit (3.2 US Gal.) Separate Tank and/or 1.15 Lit (0.3 US Gal.) Integral Tank	External		
Weight*	95 kg (209 lbs)		71.5 kg (158 lbs)		43 kg (95 lbs)		37 kg (81.5 lbs)			26.6 kg (59 lbs)	25.6 kg (57 lbs)	27.2 kg (60 lbs)	28.6 kg (63 lbs)	
Alternator Output	12V, 252W, 21A		12V, 180W, 15A		12V, 145W, 12A		12V, 80W, 6A**			12V, 60W, 5A	Opt. 12V, 60W, 5A		12V, 60W, 5A	
Compatible with TOCS	S	S	S	S	-	-	-	-	-	-	-	-	-	

* Weight Specification is based on the lightest version.

** Alternator on Certain Models

LEGEND S Standard

Specifications are subject to change without notice.

Tohatsu MFS Series

Model	MFS5	MFS4	MFS3.5	MFS2.5
No. of Cylinder	1			
Output	5 ps (3.7 kw)	4 ps (2.9 kw)	3.5 ps (2.6 kw)	2.5 ps (1.8 kw)
Displacement	123 cm ³ (7.5 cu.in)		86 cm ³ (5.2 cu.in)	
Bore x Stroke	59 x 45 mm (2.32 x 1.77 in)		55 x 36 mm (2.17 x 1.42 in)	
Max. RPM Range	5,000 - 6,000 r/min		4,500 - 5,500 r/min	
Starting	Manual			
Control Type	Tiller Handle or Opt. Remote Control		Tiller Handle	
Gear Shift	Forward - Neutral - Reverse		Forward - Neutral	
Gear Ratio	2.15:1			
Propeller Selection Range	6" - 9"		4.5" - 7"	
Transom Height	15", 20"			
Fuel	Unleaded Gasoline (87 Octane)			
Recommended Oil	Tohatsu 4 stroke Outboard Motor Oil			
Fuel Tank	12 Lit (3.2 US Gal.) Separate Tank and/or 1.15 Lit (0.3 US Gal.) Integral Tank		1 Lit (0.26 US Gal.) Integral Tank	
Weight*	27.2 kg (60 lbs)	26.1 kg (58 lbs)	18.4 kg (41 lbs)	
Alternator Output	Opt. 12V, 60W, 5A		N/A	
Compatible with TOCS	-	-	-	-

* Weight Specification is based on the lightest version.

** Alternator on Certain Models

LEGEND S Standard

Tohatsu MD Series

Model	MD115	MD90	MD75	MD50	MD40	MD30
No. of Cylinder	4	3				
Output	115 ps (84.6 kw)	90 ps (66.2 kw)	75 ps (56 kw)	50 ps (36.8 kw)	40 ps (29.4 kw)	30 ps (22.1 kw)
Displacement	1768 cm ³ (107.9 cu.in)	1267 cm ³ (77.3 cu.in)		697 cm ³ (42.5 cu.in)		
Bore x Stroke	88 x 72.7 mm (3.46 x 2.86 in)	86 x 72.7 mm (3.39 x 2.86 in)		68 x 64 mm (2.68 x 2.52 in)		
Max. RPM Range	5,150 - 5,850 r/min					4,750 - 5,750 r/min
Starting	Electric					
Control Type	Remote Control			Remote Control or Tiller Handle		
Gear Shift	Forward - Neutral - Reverse					
Gear Ratio	2.0:1	2.3:1		1.85:1		
Propeller Selection Range	9" - 21"	11" - 21"		7" - 17"		
Transom Height	20", 25"			15", 20"		20"
Fuel	Unleaded Gasoline (87 Octane)					
Recommended Oil	Tohatsu Premium Outboard Motor Oil					
Fuel Tank	Optional			25 Lit (6.6 US Gal.) Separate Tank		
Weight*	178 kg (392 lbs)	150 kg (331 lbs)		93.5 kg (205.7 lbs)		94.5 kg (208 lbs)
Alternator Output	12V, 490W, 40A			12V, 280W, 23A		
Compatible with TOCS	S	S	S	S	S	S

Specifications are subject to change without notice.

Tohatsu M Series

Model	M140	M115	M90	M70	M70 CX PRO	M60	M50	M40	M30	M25	M25 Jet Drive	M18	M15	M9.9	M9.8	
No. of Cylinder	4		3						2							
Output	140 ps (103 kw)	115 ps (84.6 kw)	90 ps (66 kw)	70 ps (51.5 kw)		60 ps (44.1 kw)	50 ps (36.8 kw)	40 ps (29.4 kw)	30 ps (22.1 kw)	25 ps (18.4 kw)	Jet Power L: 25ps (18.4kw) L: 30ps (22.1kw)	18 ps (13.2 kw)	15 ps (11 kw)	9.9 ps (7.3 kw)	9.8 ps (7.2 kw)	
Displacement	1768 cm ³ (107.9 cu.in)		1267cm ³ (77.3 cu.in)	938 cm ³ (57.23 cu.in)			697 cm ³ (42.53 cu.in)		429 cm ³ (26.16 cu.in)			294cm ³ (17.94cu.in)	247 cm ³ (15.07 cu.in)		169cm ³ (10.31 cu.in)	
Bore x Stroke	88 x 72.7 mm (3.46 x 2.86 in)			74 x 72.7 mm (2.91 x 2.86 in)			68 x 64 mm (2.68 x 2.52 in)		68 x 59 mm (2.7 x 2.36 in)			60 x 52 mm (2.36 x 2.05 in)	55 x 52 mm (2.17 x 2.05 in)		50 x 43 mm (1.97 x 1.69 in)	
Max. RPM Range	5,200 - 5,700 r/min		5,000-5,500r/min	5,150 - 5,850 r/min				5,000-5,700 r/min	5,150-5,850 r/min	5,000-6,000 r/min	5,200-5,600 r/min	5,200 - 5,800 r/min		4,500-5,300 r/min	5,000-6,000 r/min	
Starting	Electric			Manual or Electric	Manual	Electric	Manual or Electric				Manual (Option: Electric)	Electric & Manual or Manual				
Control Type	Remote Control			Tiller Handle or Remote Control	Tiller Handle	Tiller Handle or Remote Control				Tiller Handle	Tiller Handle or Remote Control					
Gear Shift	Forward - Neutral - Reverse															
Gear Ratio	2:1			2.33:1			1.85:1		1.92:1		1:1	1.85:1		2.08:1		
Propeller Selection Range	9" - 21"						7" - 15"		8" - 14"		-	6" - 11.5"		6.5" - 9.5"		
Transom Height	20", 25"				20"		15", 20"	15", 20", 22"		15", 20"		20"	15", 20"			
Fuel	Unleaded Gasoline (87 Octane)															
Recommended Oil	Tohatsu 2stroke Outboard Motor Oil															
Fuel Tank	25 Lit (6.6 US Gal.)														12 Lit (3.17 US Gal.)	
Weight*	164 kg (362 lbs)		135 kg (298 lbs)	105.5 kg (233 lbs)		115 kg (254 lbs)	72 kg (159 lbs)		51 kg (112 lbs)		59 kg (130 lbs)	90 kg (41 lbs)		26 kg (57 lbs)		
Alternator Output	12V, 330W, 27.5A			12V, 130W, 11A									12V, 80W, 7A		Opt. 12V, 80W, 7A	
Compatible with TOCS	-															

* Weight Specification is based on the lightest version.

** Alternator on Certain Models

LEGEND S Standard

Specifications are subject to change without notice.

Tohatsu M Series

Model	M8	M6	M5	M4	M3.5B	M3.5A	M2.5A
No. of Cylinder	2		1				
Output	8 ps (5.9 kw)	6 ps (4.4 kw)	5 ps (3.7 kw)	4 ps (2.9 kw)	3.5 ps (2.6 kw)		2.5 ps (1.8 kw)
Displacement	169 cm ³ (10.31 cu.in)		102 cm ³ (6.22 cu.in)		74.6 cm ³ (4.55 cu.in)		
Bore x Stroke	50 x 43 mm (1.97 x 1.69 in)		55 x 43 mm (2.17 x 1.69 in)		47 x 43 mm (1.85 x 1.69 in)		
Max. RPM Range	4,500 - 5,500 r/min				4,200 - 5,300 r/min		3,800-5,200 r/min
Starting	Manual or Electric	Manual					
Control Type	Tiller Handle or Remote Control		Tiller Handle		Throttle Lever		
Gear Shift	Forward - Neutral - Reverse				Forward - Neutral	Forward Only	
Gear Ratio	2.08:1		2.15:1		1.85:1		
Propeller Selection Range	6.5" - 9.5"		6" - 9"		4.5" - 7"	4.5" - 6"	
Transom Height	15", 20"						
Fuel	Unleaded Gasoline (87 Octane)						
Recommended Oil	Tohatsu 2stroke Outboard Motor Oil						
Fuel Tank	12 Lit (3.17 US Gal.)		12 Lit (3.17 US Gal.) and 2.5 (0.66)	2.5 Lit (0.66 US Gal.)	1.4 Lit (0.37 US Gal.)		
Weight*	26 kg (57 lbs)		20 kg (44 lbs)		13 kg (29 lbs)	12.5 kg (28 lbs)	
Alternator Output	Opt.		Opt.		-	-	-
Compatible with TOCS	-						

* Weight Specification is based on the lightest version.

** Alternator on Certain Models

LEGEND S Standard

Specifications are subject to change without notice.

Tohatsu MX Series

Model	MX50	MX40	MX30	MX25	MX18	MX15
No. of Cylinder	3			2		
Output	50 ps (36.8 kw)	40 ps (29.4 kw)	30 ps (22.1 kw)	25 ps (18.4 kw)	18 ps (13.2 kw)	15 ps (11 kw)
Displacement	697 cm ³ (42.53 cu.in)		429 cm ³ (26.16 cu.in)		294 cm ³ (17.94 cu.in)	
Bore x Stroke	68 x 64 mm (2.68 x 2.52 in)		68 x 59 mm (2.68 x 2.32 in)		60 x 52 mm (2.36 x 2.05 in)	
Max. RPM Range	5,000 - 5,800 r/min		5,150 - 5,850 r/min	5,000-6,000 r/min	5,200-5,800 r/min	4,500-5,500 r/min
Starting	Electric & Manual or Electric			Manual		
Control Type	Tiller Handle or Opt. Remote Control					
Gear Shift	Forward - Neutral - Reverse					
Gear Ratio	2.08:1		1.92:1		1.85:1	
Propeller Selection Range	7" - 15"		8" - 14"		6" - 11.5"	
Transom Height	15", 20", 22.5", 25"		15", 20", 25"		15", 20"	
Fuel	Unleaded Gasoline (87 Octane)					
Recommended Oil	Tohatsu 2stroke Outboard Motor Oil					
Fuel Tank	25 Lit (6.6 US Gal.)					
Weight*	72 kg (159 lbs)		51 kg (112 lbs)		41 kg (90 lbs)	
Alternator Output	12V, 130W, 11A		Opt. 12V, 80W, 7A			
Compatible with TOCS	-					

TOHATSU CORPORATION

5-4, Azusawa 3-Chome, Itabashi-Ku

Tokyo 174-0051, Japan

www.tohatsu.com

